

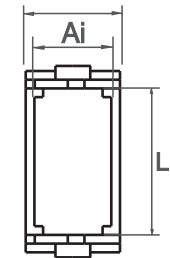
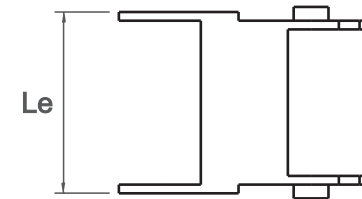
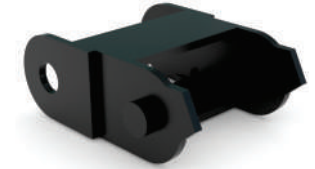
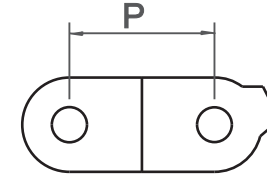
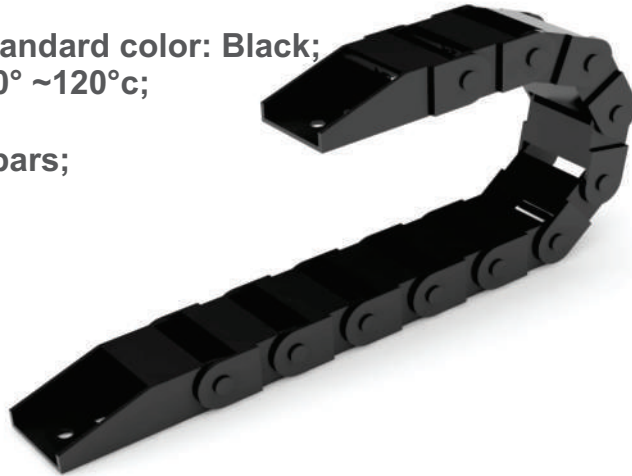
Cable Carrier T20.10

Technical Specifications

Produced in Nylon - Standard color: Black;
Temperature range: -30° ~120°C;

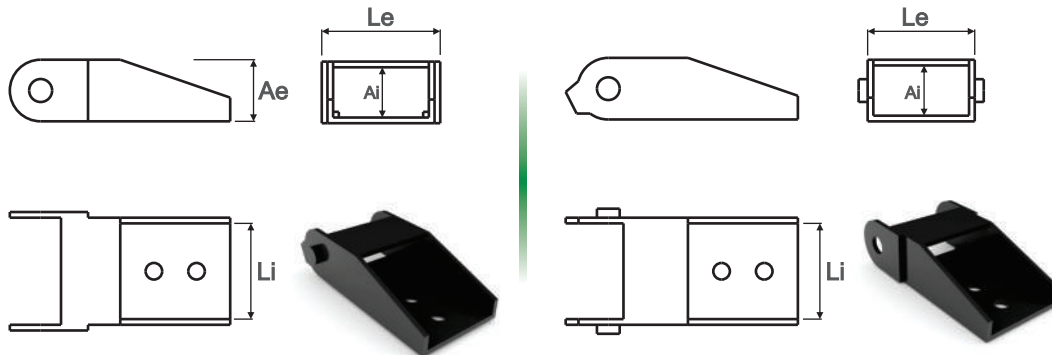
Links with fixed crossbars;

Available in 3 radius.

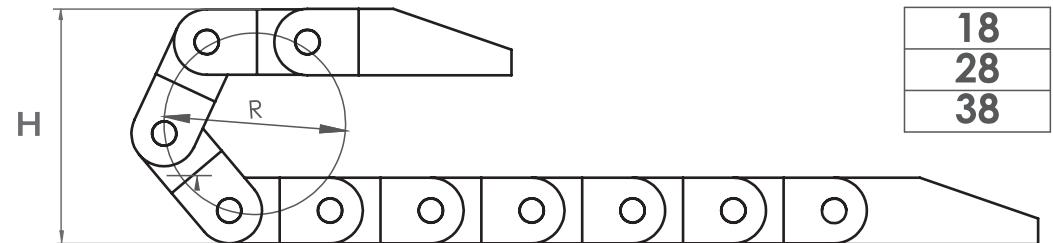


Mounting Brackets

Each cable carrier needs one set of mounting brackets made by two brackets. Each bracket should be fixed in each end of the cable carrier.



Radius



18
28
38

CODE	DESCRIPTION	INNER DIMENSIONS (Li x Ai)	EXTERNAL DIMENSIONS (Le x Ae)
03071	MOUNTING BRACKETS SET T20.10	20,6X10,6	25X13

CODE	DESCRIPTION	INNER DIMENSIONS (Li x Ai)	EXTERNAL DIMENSIONS (Le x Ae)	HEIGHT (H)	RADIUS (R)	PITCH (P)	LINKS/METRO	WEIGHT/METRO
03046	CABLE CARRIER T20.10.R18mm	20,6X10,6	25X13	46	18	20	49	123gr
03074	CABLE CARRIER T20.10.R28mm	20,6X10,6	25X13	70	28	20	49	123gr
03075	CABLE CARRIER T20.10.R38mm	20,6X10,6	25X13	87	38	20	49	123gr

*Unit of measurement: millimeters