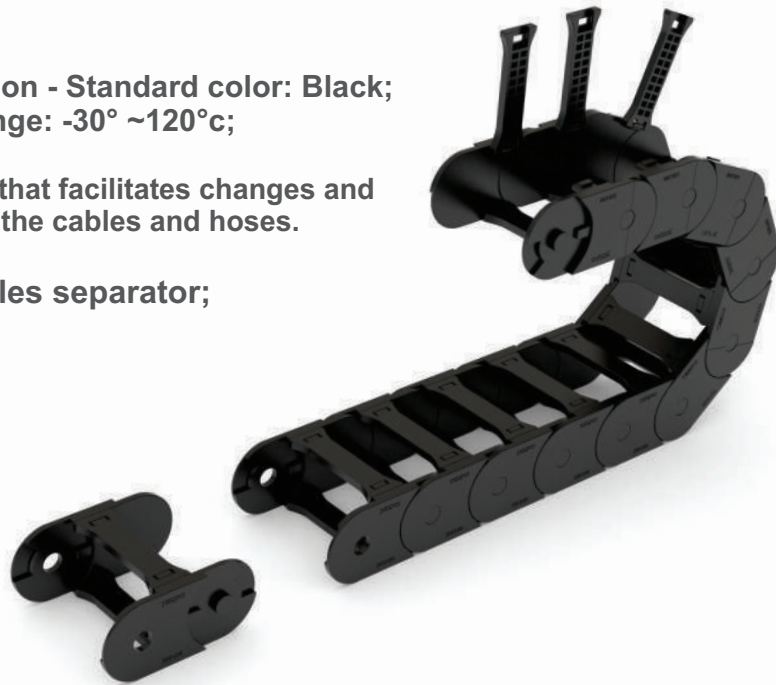


# Cable Carrier T100.50

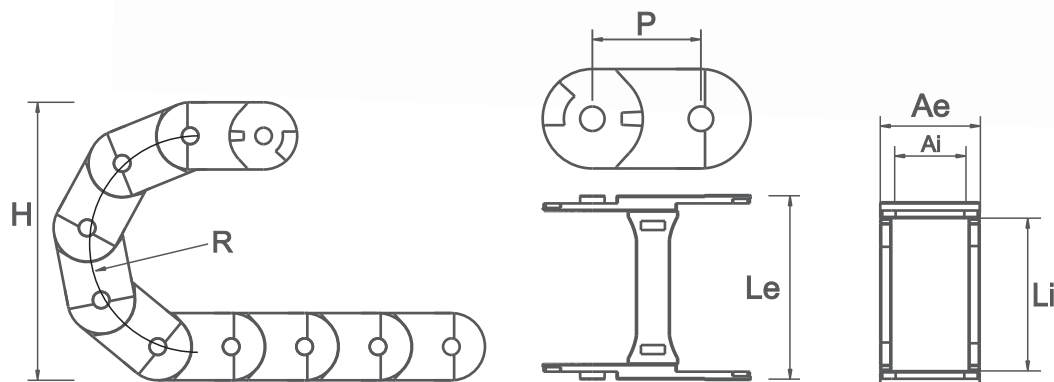
Produced in Nylon - Standard color: Black;  
Temperature range: -30° ~120°C;

Opening system that facilitates changes and  
maintenances of the cables and hoses.

Model with cables separator;

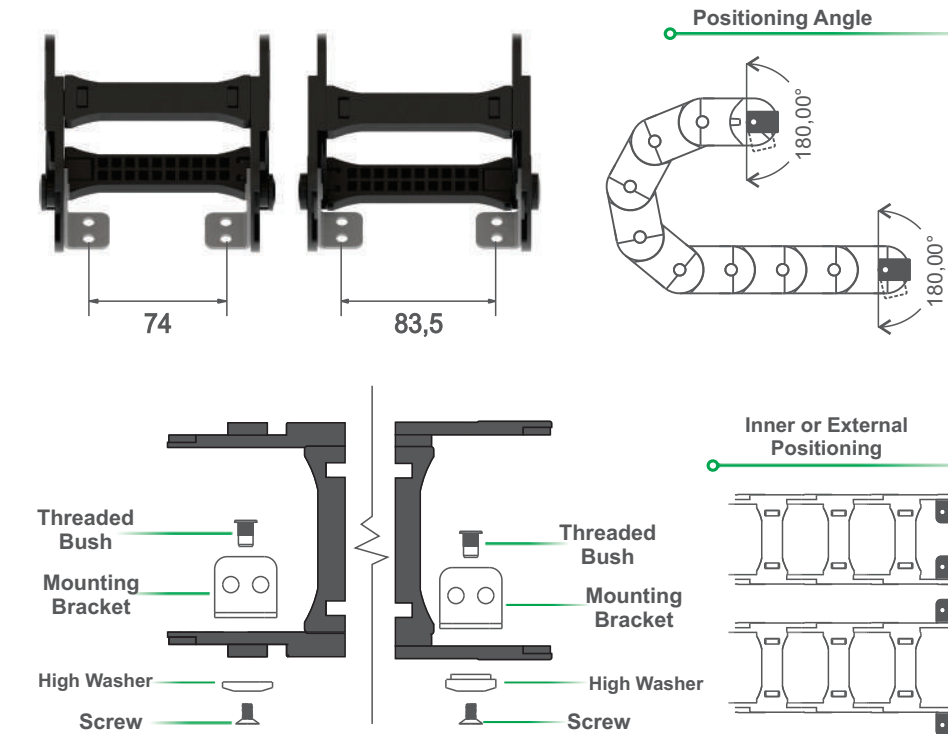


## Technical Specifications

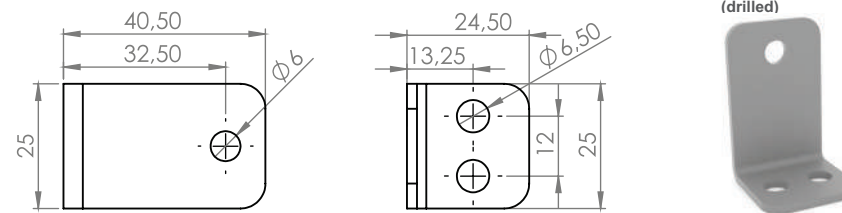
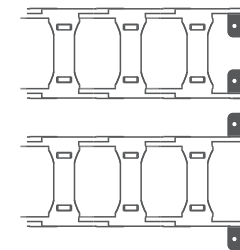


CODE	DESCRIPTION	INNER DIMENSIONS (Li x Ai)	EXTERNAL DIMENSIONS (Le x Ae)	HEIGHT (H)	RADIUS (R)	PITCH (P)	LINKS/ METRO	WEIGHT/ METRO
03707	CABLE CARRIER T100.50.R100mm	100x50	122X65	270	100	71	14	2005gr
03708	CABLE CARRIER T100.50.R150mm	100x50	122X65	370	150	71	14	2005gr

## Mounting bracket



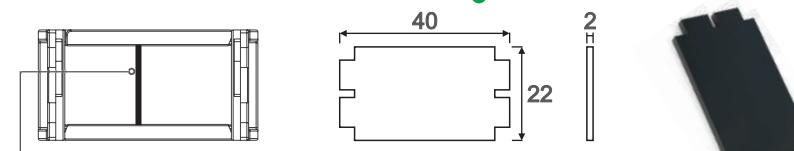
Inner or External  
Positioning



CODE	DESCRIPTION	INNER DIMENSIONS (Li x Ai)	EXTERNAL DIMENSIONS (Le x Ae)
03719	MOUNTING BRACKET SET	100x50	129X65

\*Unit of measurement: millimeters

## Cables Separator (Cód. 03558)



Example of separator  
position inside of the link

\* Recommended to add  
1 separator every 3 links

## Assembly Plan

Step 1



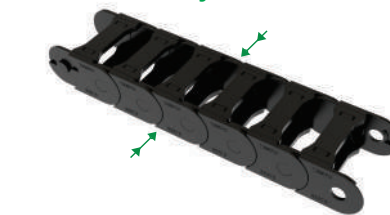
Step 2



Step 3



Final Assembly



\*Optional wrench is available to  
help during assembly process  
(Cód.03684)

