

Cable Carrier T50.35

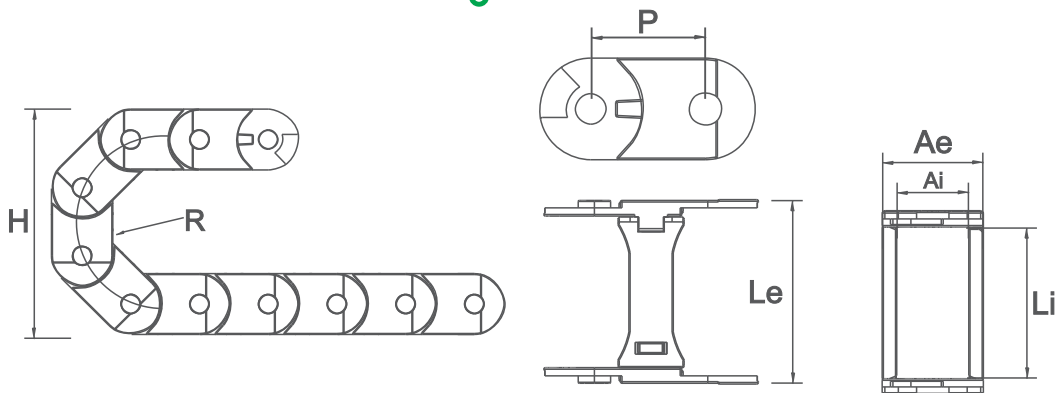
Produced in Nylon - Standard color: Black;
Temperature range: -30° ~120°C;

Opening system that facilitates changes and
maintenances of the cables and hoses.

Model with cables separator.



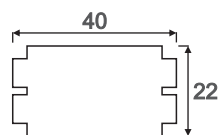
Technical Specifications



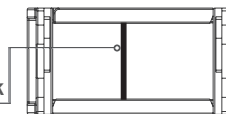
CODE	DESCRIPTION	INNER DIMENSIONS (Li x Ai)	EXTERNAL DIMENSIONS (Le x Ae)	HEIGHT (H)	RADIUS (R)	PITCH (P)	LINKS/ METRO	WEIGHT/ METRO
03467	CABLE CARRIER T50.35 R75mm	50x35	66x50	185	75	56	18	1430gr
03770	CABLE CARRIER T50.35 R150mm	50x35	66x50	335	150	56	18	1430gr

*Unit of measurement: millimeters

Cables Separator (Cód. 03558)



Example of separator
position inside of the link

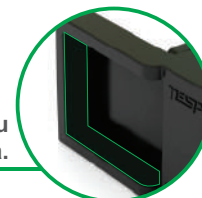
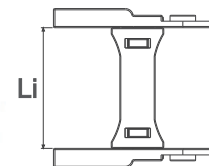
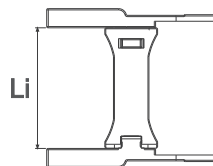
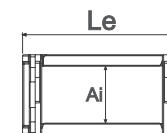
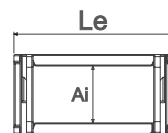
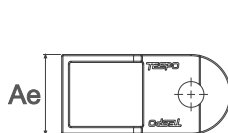


* Recommended to add
1 separator every 3 links

Mounting Brackets

Each cable carrier needs one set of mounting brackets made by two
brackets. Each bracket should be fixed in each end of the cable carrier.

CODE	DESCRIPTION	INNER DIMENSIONS (Li x Ai)	EXTERNAL DIMENSIONS (Le x Ae)
03468	MOUNTING BRACKETS SET T50.35	50x35	74x50



For fixing the mounting brackets, you
can add holes in the highlighted area.

Assembly Plan

Step 1



Step 2



Step 3



Final Assembly



*Optional wrench is available to
help during assembly process
(Cód.03684)

